

MANUFACTURING PRODUCTION, AUSTRALIA JANUARY 1994, PRELIMINARY

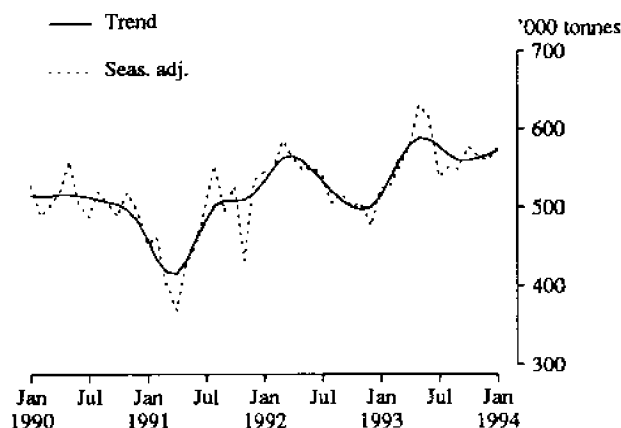
NOTES

This publication presents preliminary monthly estimates for selected major indicators of manufacturing production for Australia. The following adjustments have been made to data in this issue: (i) Seasonally adjusted estimates of production of electric motors, cars and station wagons, wool yarn and man made fibre woven fabric have been revised and new seasonal factors calculated. (ii) Trend estimates of production of textile floor coverings and chocolate based confectionery have been calculated to discount extraordinary movements in January 1994, seasonally adjusted estimates. For details of these see "Related publications", in the Explanatory Notes at the back of this publication. The next issue will be released on 25 March 1994.

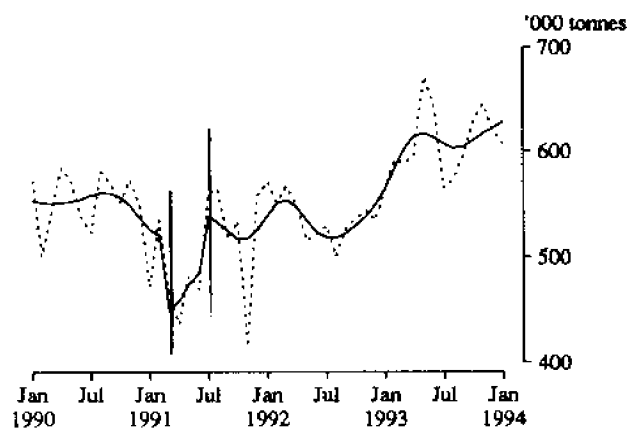
IAN CASTLES
Australian Statistician

PRODUCTION STATISTICS, AUSTRALIA : TRENDS

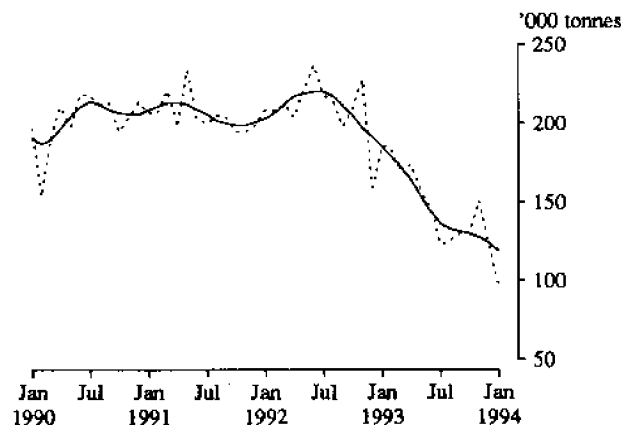
1. BASIC IRON



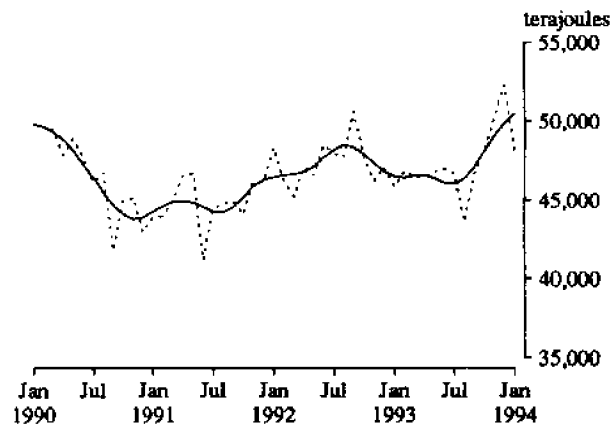
2. IRON AND STEEL IN PRIMARY FORMS(a)(b)



3. BLOOMS AND SLABS



4. GAS



For footnotes see end of graph.

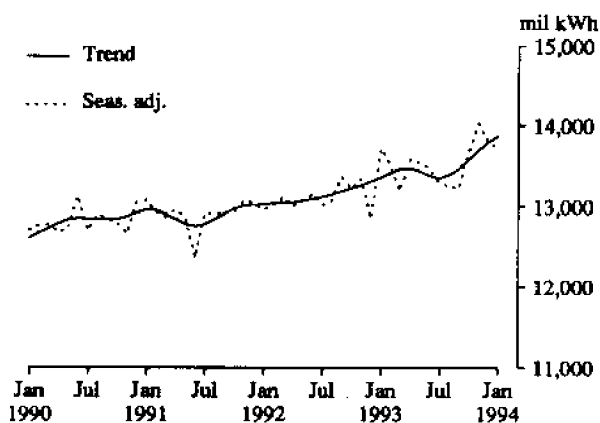
INQUIRIES

• for further information about statistics in this publication and the availability of related unpublished statistics, contact Rod Smith on Melbourne (03) 615 7635 or any ABS office.

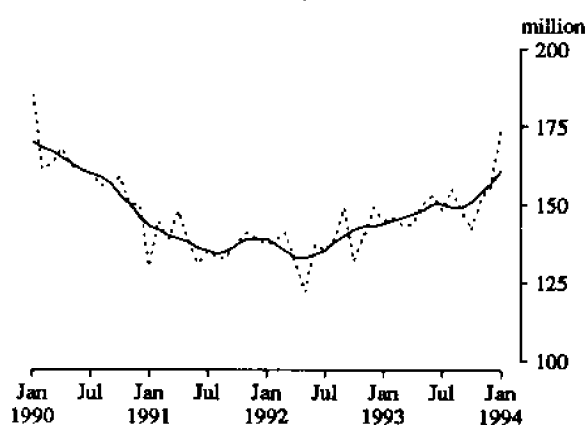
• for information about other ABS statistics and services please refer to the back page.

PRODUCTION STATISTICS, AUSTRALIA : TRENDS

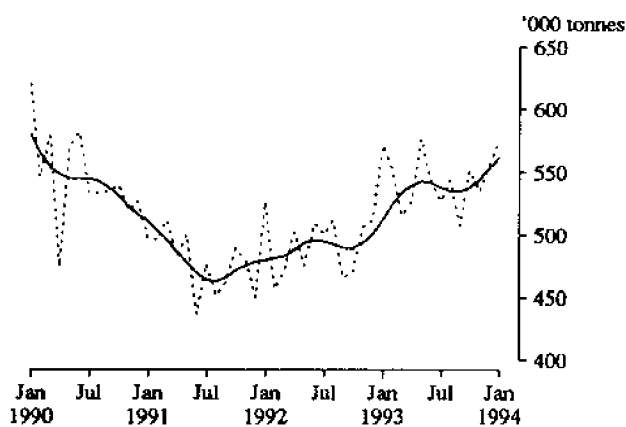
5. ELECTRICITY



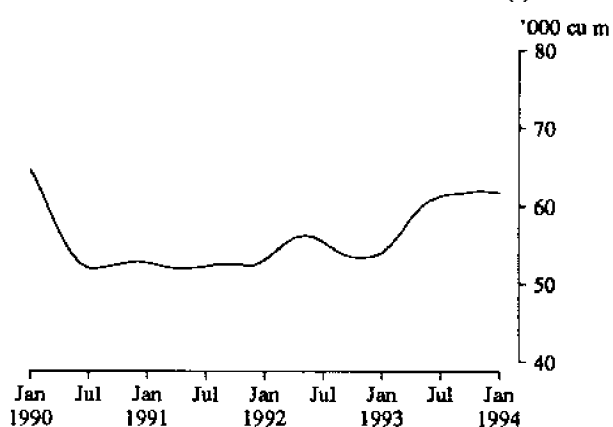
6. BRICKS, CLAY



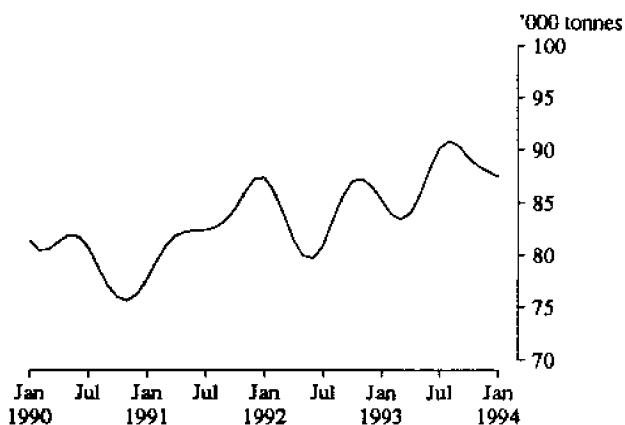
7. CEMENT, PORTLAND



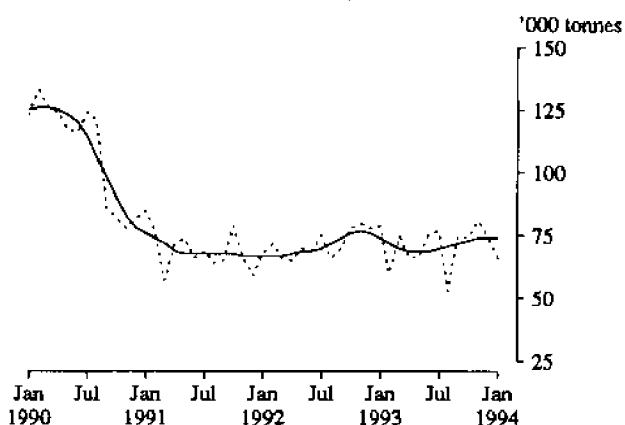
8. PARTICLE BOARD AND SIMILAR BOARD(c)



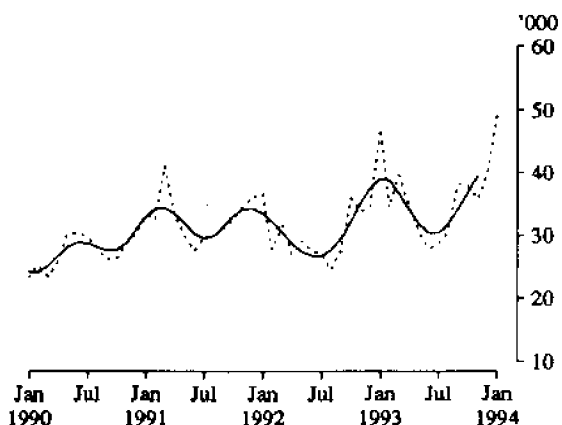
9. PLASTICS IN PRIMARY FORMS(c)



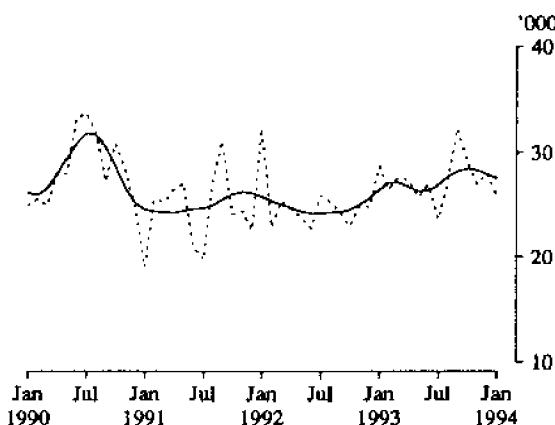
10. SULPHURIC ACID; OLEUM



11. REFRIGERATORS, DOMESTIC(d)

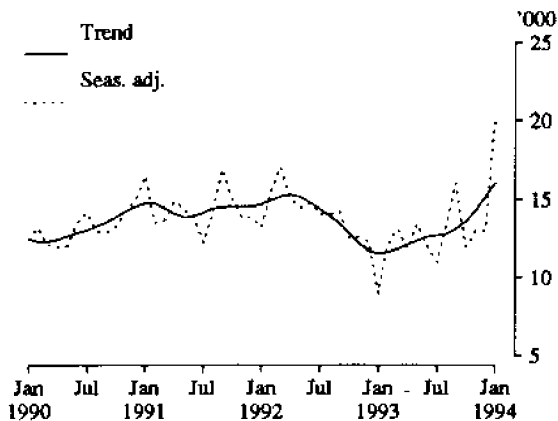


12. CLOTHES WASHING MACHINES, DOMESTIC

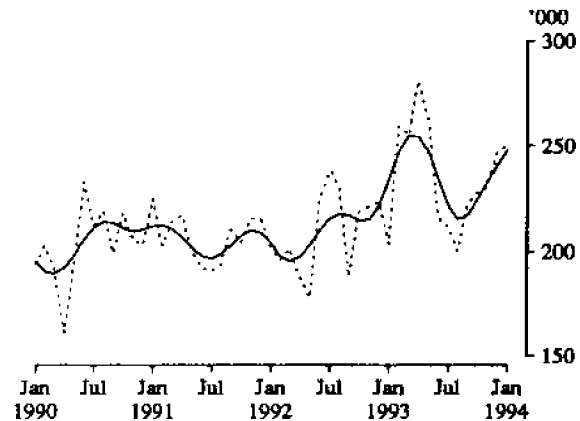


PRODUCTION STATISTICS, AUSTRALIA : TRENDS

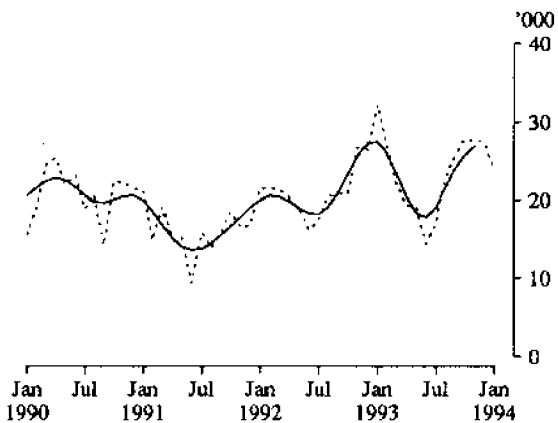
13. TELEVISION SETS



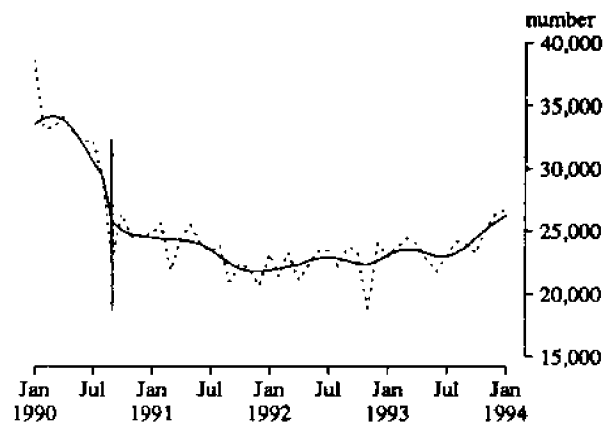
14. ELECTRIC MOTORS r



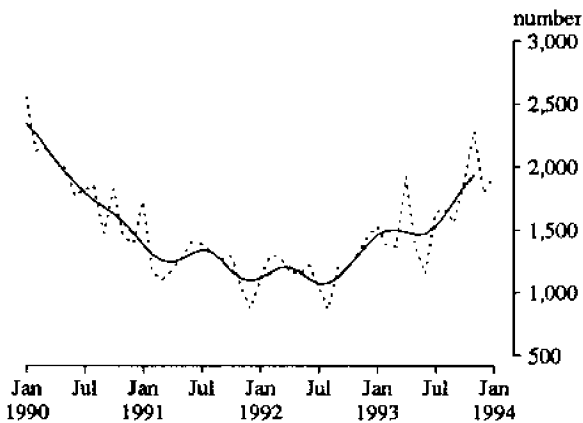
15. LAWN MOWERS, PETROL-ROTARY TYPE(d)



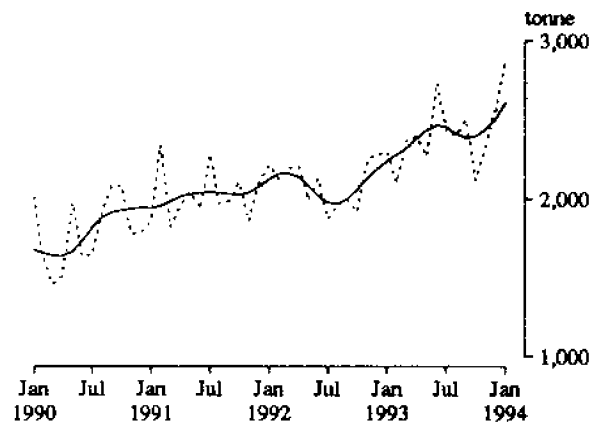
16. MOTOR VEHICLES (CARS AND STATION WAGONS)(r)(e)



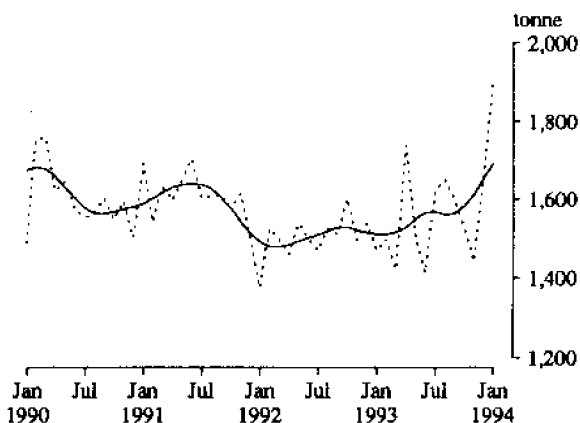
17. MOTOR VEHICLES FOR GOODS AND MATERIALS(d)



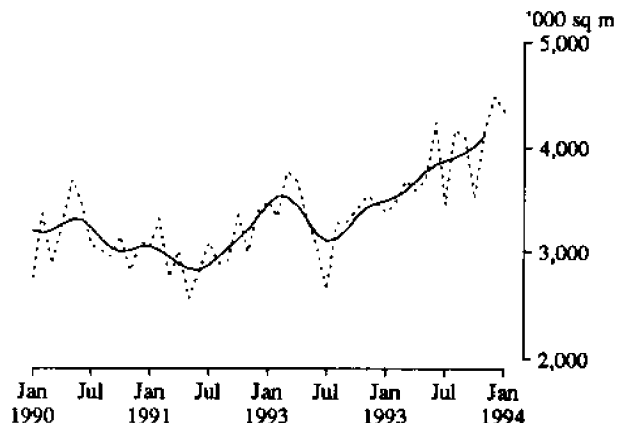
18. YARN, COTTON



19. YARN, WOOL r

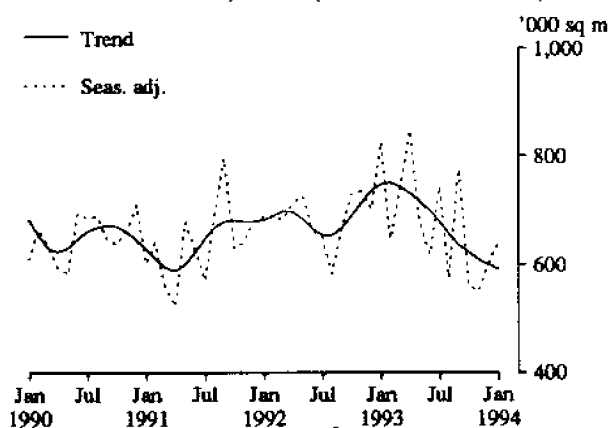


20. WOVEN FABRIC, COTTON (INCL. TOWELLING)(d)

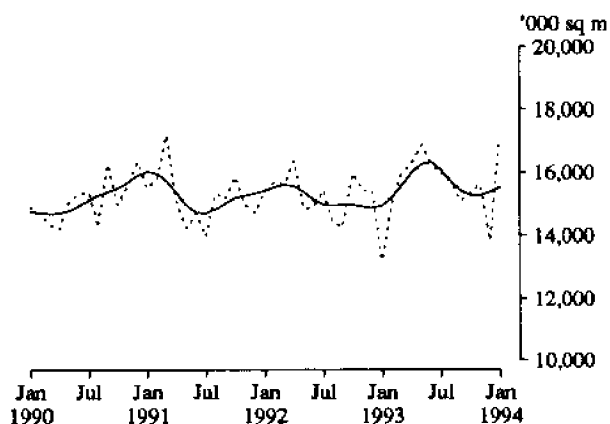


PRODUCTION STATISTICS, AUSTRALIA : TRENDS

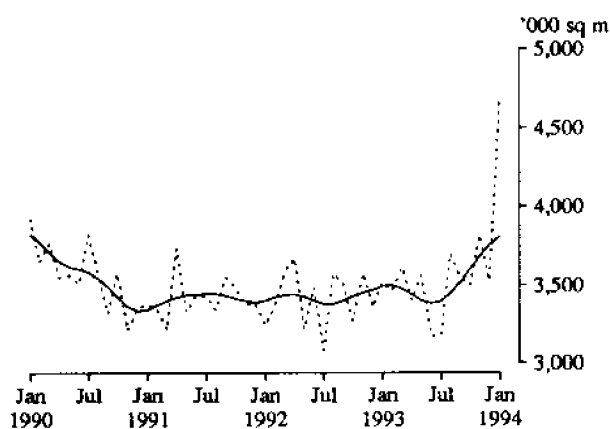
21. WOVEN FABRIC, WOOL(INCL. BLANKETING)



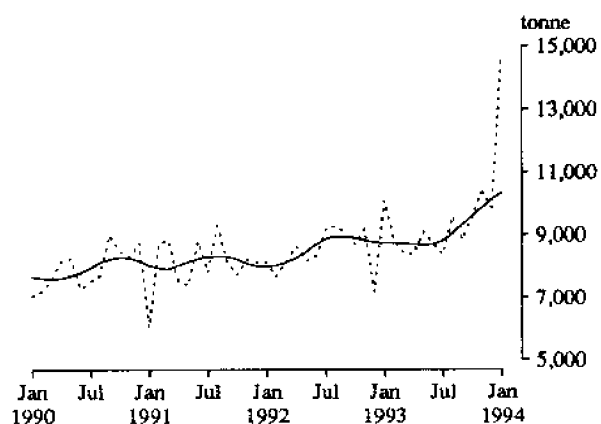
22. WOVEN FABRIC, MAN-MADE FIBRE r



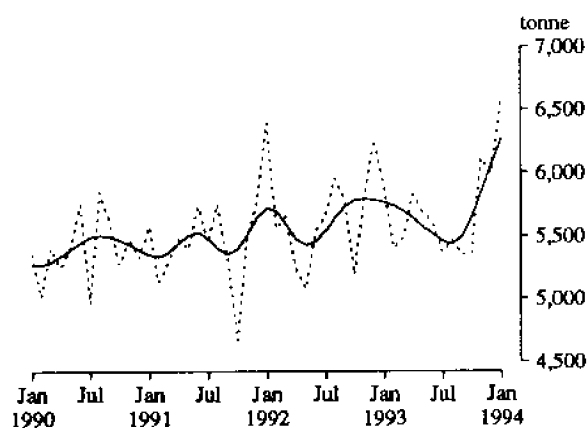
23. TEXTILE FLOOR COVERINGS



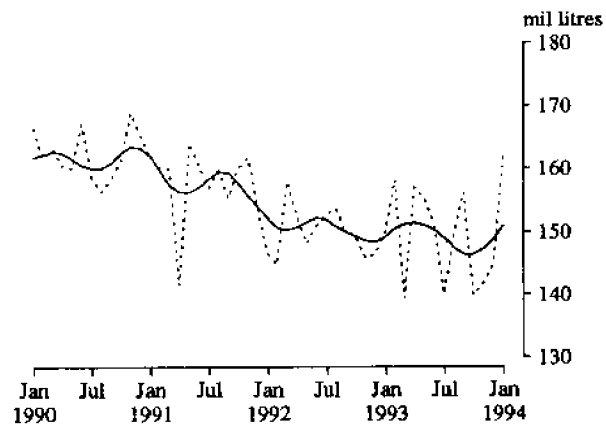
24. CONFECTIONERY, CHOCOLATE BASED



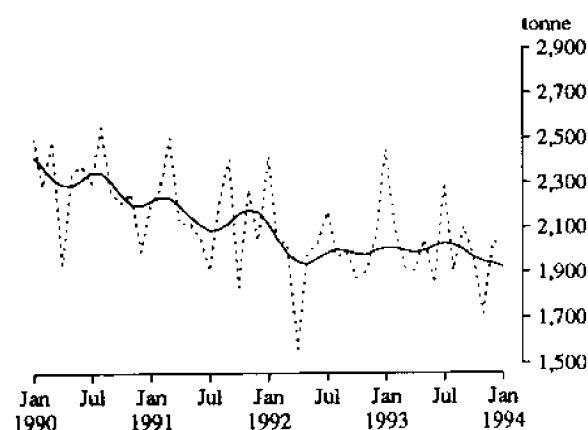
25. CONFECTIONERY, OTHER



26. BEER



27. TOBACCO AND CIGARETTES



(a) There is a drop in the level of the trend from March 1991 due to plant maintenance. (b) There is a break in the series as data after July 1991 excludes a small quantity of total production due to the withdrawal of consent for the ABS to release the information. (c) Seasonally adjusted estimates will not be published

PRODUCTION STATISTICS, AUSTRALIA, JANUARY 1994, PRELIMINARY

No. Item	Series	Unit	1993								Percentage changes between:		
											1994	Dec. 93	Jan. 93
			May	June	July	Aug.	Sept.	Oct.	Nov.	Dec.	Jan.	and Jan. 94	and Jan. 94
1. Basic iron, spiegeleisen and sponge iron	Orig.	'000 tonnes	587	568	572	588	574	613	600	591	582	-1.5	9.6
	S. adj.	"	631	614	539	552	550	577	566	559	575	2.9	9.6
	Trend r	"	589	587	577	567	560	560	563	566	572	1.0	10.9
2. Iron and steel in ingots or other primary forms(a)	Orig.	"	639	613	604	613	625	654	638	638	613	-3.9	5.3
	S. adj.	"	672	641	566	574	597	628	645	620	607	-2.0	7.3
	Trend r	"	618	613	607	604	605	611	618	623	629	0.9	11.2
3. Blooms and slabs(b)	Orig.	"	150	143	133	138	139	137	137	126	92	-27.0	-48.6
	S. adj.	"	158	146	123	126	130	130	151	124	96	-22.6	-48.6
	Trend r	"	154	144	136	133	131	130	128	124	119	-3.4	-35.3
4. Gas(c)	Orig.	terajoules	50,366	56,977	56,807	54,634	51,367	r 48,058	r 46,251	r 43,736	38,251	-12.5	4.4
	S. adj.	"	46,824	46,986	46,652	43,617	46,719	r 48,305	r 50,423	r 52,309	48,030	-8.2	4.8
	Trend r	"	46,382	46,082	46,029	46,396	47,175	48,163	49,135	49,921	50,525	1.2	8.7
5. Electricity	Orig.	mil kWh	13,746	14,259	14,590	14,354	13,254	13,464	13,302	13,453	13,163	-2.2	-0.9
	S. adj.	"	13,534	13,479	13,303	13,252	13,216	13,657	14,028	13,811	13,713	-0.7	-0.1
	Trend r	"	13,440	13,383	13,357	13,392	13,469	13,583	13,700	13,797	13,876	0.6	3.8
6. Bricks, clay	Orig.	million	159	162	154	166	156	147	161	r 144	110	-23.6	17.0
	S. adj.	"	150	153	148	155	148	142	152	r 156	174	11.2	19.3
	Trend r	"	148	150	150	149	149	151	154	157	161	2.6	12.0
7. Cement, Portland	Orig.	'000 tonnes	613	546	558	572	518	594	594	r 539	396	-26.5	-2.0
	S. adj.	"	577	542	527	544	508	552	535	r 557	575	3.2	0.6
	Trend r	"	543	542	538	535	535	538	545	554	562	1.5	9.6
8. Particle board and similar boards(d)	Orig.	'000 cu m	59	62	61	68	67	68	69	r 55	32	-41.8	39.1
	S. adj.	"	n.a.	n.a.	n.a.	n.a.	n.a.	n.a.	n.a.	n.a.	n.a.	n.a.	n.a.
	Trend r	"	60	61	61	62	62	62	62	62	62	-0.2	14.1
9. Plastics in primary forms(e)	Orig.	'000 tonnes	85.9	87.5	94.8	94.8	95.7	95.2	90.0	r 79.3	80.6	1.7	11.5
	S. adj.	"	n.a.	n.a.	n.a.	n.a.	n.a.	n.a.	n.a.	n.a.	n.a.	n.a.	n.a.
	Trend r	"	85.8	88.3	90.2	90.8	90.3	89.3	88.4	87.9	87.5	-0.5	2.6
10. Sulphuric acid; oleum	Orig.	"	71	75	64	42	61	67	76	83	82	-1.2	-12.8
	S. adj.	"	67	76	77	53	75	74	81	75	66	-11.5	-15.7
	Trend r	"	69	69	70	71	72	73	74	74	74	0.0	0.1
11. Refrigerators, domestic	Orig.	'000	31.9	26.5	29.9	32.5	41.8	38.8	41.6	37.2	35.8	-3.8	3.2
	S. adj.	"	30.5	28.0	28.6	30.8	38.2	38.0	35.8	39.8	49.3	23.7	4.7
	Trend r	"	31.8	30.4	30.4	31.8	34.1	36.8	39.4	(f)	(f)	n.a.	n.a.
12. Clothes washing machines, domestic	Orig.	"	25.1	27.4	27.8	32.3	34.5	29.6	29.9	25.0	11.8	-53.0	-16.2
	S. adj.	"	25.7	27.0	23.6	26.8	32.3	29.1	27.0	28.0	25.9	-7.5	-9.7
	Trend r	"	26.3	26.4	26.9	27.6	28.2	28.4	28.3	27.9	27.5	-1.4	4.1
13. Television sets(g)	Orig.	"	14.3	12.2	12.3	15.7	17.4	13.8	14.7	12.1	5.4	-55.8	104.0
	S. adj.	"	13.5	12.0	11.0	13.4	16.1	12.0	13.1	13.0	20.1	54.8	124.6
	Trend r	"	12.4	12.7	12.7	12.8	13.2	13.7	14.4	15.2	16.1	5.9	39.1
14. Electric motors(h)	Orig.	"	262	209	217	200	262	252	254	225	161	-28.5	16.0
	S. adj.	"	262	216	212	200	223	228	231	247	250	1.2	22.9
	Trend r	"	247	234	222	216	217	225	233	241	248	2.8	5.8

For footnotes see end of table

PRODUCTION STATISTICS, AUSTRALIA, JANUARY 1994, PRELIMINARY

No. Item	Series	Unit	1993								Percentage changes between—		
			May	June	July	Aug.	Sept.	Oct.	Nov.	Dec.	1994 Jan.	Dec. 93 and Jan. 94	Jan. 93 and Jan. 94
15. Lawn mowers petrol-rotary type	Orig.	'000	9.3	7.2	13.0	24.2	39.6	42.7	42.3	31.8	18.2	-42.8	-25.1
	S. adj.	"	19.1	14.4	17.1	22.9	25.6	27.8	27.6	27.4	23.9	-12.9	-26.0
	Trend r	"	18.3	17.8	19.2	21.6	24.0	25.8	26.9	(f)	(f)	n.a.	n.a.
Motor vehicles—													
16. Cars and station wagons(h)	Orig.	number	25,000	23,869	25,995	27,637	26,918	24,592	27,982	r 21,120	11,978	-43.3	17.5
	S. adj. r	"	22,751	21,787	23,022	24,217	23,918	23,291	25,090	r 26,410	26,792	1.4	16.7
	Trend r	"	23,254	23,002	23,002	23,267	23,806	24,460	25,117	25,763	26,284	2.0	13.8
17. Vehicles for goods and materials(i)	Orig.	"	1,547	1,344	1,720	1,877	1,752	2,223	2,172	r 1,549	803	-48.2	26.3
	S. adj.	"	1,355	1,153	1,649	1,672	1,557	1,901	2,287	r 1,794	1,924	7.3	25.6
	Trend r	"	1,467	1,473	1,526	1,620	1,736	1,852	1,934	(f)	(f)	n.a.	n.a.
Yarn(j)—													
18. Cotton	Orig.	tonne	2,202	3,109	2,744	2,539	2,743	2,478	2,357	r 2,306	1,583	-31.4	16.3
	S. adj.	"	2,268	2,734	2,423	2,398	2,499	2,116	2,332	r 2,568	2,883	12.3	25.3
	Trend r	"	2,434	2,464	2,449	2,409	2,381	2,391	2,439	2,510	2,611	4.0	16.5
19. Wool(h)	Orig.	"	1,502	1,601	1,694	1,819	1,796	r 1,617	r 1,694	r 1,421	1,113	-21.7	27.6
	S. adj. r	"	1,507	1,414	1,623	1,652	1,604	r 1,532	r 1,440	r 1,653	1,896	14.7	29.1
	Trend r	"	1,551	1,566	1,567	1,561	1,563	1,582	1,612	1,653	1,691	2.3	11.9
Woven fabric(j)—													
20. Cotton (incl. towelling)	Orig.	'000 sq m	3,935	4,462	4,492	4,237	4,467	r 4,132	r 4,020	r 3,779	1,695	-55.1	21.1
	S. adj.	"	3,683	4,243	3,451	4,175	4,096	r 3,518	r 4,178	r 4,491	4,337	-3.4	28.6
	Trend r	"	3,770	3,836	3,873	3,904	3,952	4,024	4,118	(f)	(f)	n.a.	n.a.
21. Wool (incl. blanketing)	Orig.	"	644	680	731	633	806	601	652	r 546	369	-32.4	-26.5
	S. adj.	"	679	620	744	576	777	562	552	r 601	641	6.7	-22.5
	Trend r	"	717	700	679	657	637	623	610	601	592	-1.5	-21.0
22. Man-made fibre(h)	Orig. r	"	17,199	17,461	17,195	16,155	15,889	16,005	16,349	13,690	9,891	-27.8	26.1
	S. adj. r	"	16,883	16,208	15,993	15,705	15,080	15,322	15,610	13,840	17,046	23.2	29.0
	Trend r	"	16,274	16,312	16,069	15,695	15,414	15,278	15,272	15,361	15,508	1.0	3.7
23. Textile floor coverings(k)	Orig.	"	3,753	3,314	3,456	4,036	3,978	3,793	r 4,361	r 3,429	2,524	-26.4	28.4
	S. adj.	"	3,564	3,176	3,183	3,700	3,549	3,500	r 3,822	r 3,525	4,686	32.9	33.0
	Trend r	"	3,404	3,387	3,399	3,448	3,524	3,606	3,683	3,757	3,812	1.5	9.0
Confectionery—													
24. Chocolate base(k)	Orig.	tonne	9,193	9,211	8,713	10,643	9,304	10,379	10,504	r 9,547	7,595	-20.4	42.1
	S. adj.	"	9,087	8,738	8,347	9,574	8,836	9,564	10,368	r 9,858	14,676	48.9	45.6
	Trend r	"	8,679	8,708	8,824	9,056	9,310	9,591	9,874	10,135	10,353	2.2	18.5
25. Other	Orig.	"	5,687	5,865	5,734	6,295	6,070	6,216	r 6,970	5,540	3,342	-39.7	11.4
	S. adj.	"	5,689	5,597	5,366	5,466	5,351	5,357	r 6,116	5,993	6,578	9.8	11.4
	Trend r	"	5,573	5,516	5,460	5,438	5,499	5,652	5,853	6,065	6,274	3.4	8.7
26. Beer(l)	Orig.	mil litres	137	129	128	140	143	151	r 180	184	151	-18.0	8.2
	S. adj.	"	155	151	140	150	156	140	r 142	145	162	11.7	7.9
	Trend r	"	151	150	149	147	146	146	147	149	151	1.5	1.2
27. Tobacco and cigarettes(m)	Orig.	tonne	2,304	1,924	2,453	2,082	2,035	1,810	1,988	1,877	1,001	-46.7	-18.5
	S. adj.	"	2,043	1,849	2,300	1,908	2,105	1,963	1,718	2,035	2,014	-1.0	-17.9
	Trend r	"	1,997	2,016	2,028	2,022	1,998	1,968	1,947	1,939	1,924	-0.8	-4.2

(a) Includes ingots, puddled bars, pilings, blocks or lumps and steel in the molten state. (b) From rolling and forging of iron and steel (primary mill output). (c) Available for issue through mains. Includes natural gas. (d) Particle boards and similar boards of wood or other ligneous material. Includes boards for subsequent conversion to other purposes. Excludes laminated. Seasonally adjusted estimates will not be published until a longer time span of data are available to provide more reliable seasonal factors. (e) Includes liquid, paste, powder, granules, flakes, blocks, irregular shapes, lumps and similar forms. Seasonally adjusted estimates will not be published until a longer span of data are available to provide more reliable seasonal factors. (f) See paragraph 9 of Explanatory Notes. (g) Excludes combination with radio etc. (h) Pronounced seasonal factors have influenced January seasonally adjusted data for these series for a number of years. These series have been re-analysed and new seasonal factors have been calculated. Seasonally adjusted and trend estimates included in this issue are based on the revised factors. Historical data are available on request. (i) Includes utilities, panel vans and prime movers for semi-trailers. (j) Includes mixtures predominantly of the fibre named. (k) Trend estimates have been calculated to discount extraordinary movements in January 1993 seasonally adjusted estimates. (l) Includes ale and stout. Excludes beverages with alcohol content of less than 1.15 per cent. (m) Source: Australian Tobacco Marketing Advisory Committee.

EXPLANATORY NOTES

Introduction

Preliminary estimates for January 1994 for certain major indicators of production are shown in the table on page 5. Production statistics for January 1994 for a more extensive range of commodities will be published later in the series of ten *Manufacturing Production Bulletins* (8357.0 to 8363.0 and 8367.0 to 8369.0).

Scope and coverage

2. Production statistics are not collected from single establishment manufacturing enterprises with fewer than four persons employed or from establishments predominantly engaged in non-manufacturing activities but which may carry out in a minor way some manufacturing. However, in general the contribution of these small producers to statistical aggregates is only marginal and data contained in this publication provide reliable information for the evaluation of movements in commodity production.

Comparability with other estimates

3. The ABS publishes quarterly estimates of constant price manufacturing production in the publication *Quarterly Indexes of Industrial Production, Australia* (8125.0). These estimates are shown as index numbers and are derived mainly from estimates of manufacturers' sales and stocks.

4. The production statistics published in the series of ten *Manufacturing Production Bulletins* (8357.0 to 8363.0 and 8367.0 to 8369.0) referred to in paragraph 1 account, in total, for less than half of the output of the manufacturing sector, so differences may occur between the general tendency (if there is one) in these items and changes in the quarterly indexes of industrial production. The comment applies with still greater force to the preliminary estimates for the major indicators of production shown in this publication.

Seasonally adjusted and trend estimates

5. Seasonally adjusted statistics are shown for all but two of the data items contained in this publication. In the seasonal adjustment, account has been taken not only of normal seasonal factors, but also where appropriate, of 'working day' effects (arising from the varying numbers of Sundays, Mondays, Tuesdays, etc. in the month) and the influence of Easter and Australia Day which may, in successive years, affect figures for different months. Details of the methods used in seasonally adjusting these series are available on request.

6. Seasonal adjustment procedures do not aim to remove the irregular or non-seasonal influences which may be present in any particular month, such as the effect of strikes, holiday shutdowns or other factors which vary with the prevailing demand for products. Irregular influences that are highly volatile can make it difficult to interpret the movement of the series even after seasonal adjustment.

7. The smoothing of seasonally adjusted series to create trend estimates is a means of reducing the impact of the irregular component of the series. The trend estimates have been derived by applying a 13-term Henderson weighted moving average to the seasonally adjusted series.

8. While this smoothing technique enables estimates of trend to be produced for the latest month, it does result in revisions to the estimates for the most recent months as data for subsequent months become available. Generally subsequent revisions become smaller and after 3 months

have little impact on the series. There will also be revisions as a result of revisions to the original estimates and annual reviews of seasonal and 'working day' factors.

9. Because of the highly irregular nature of some production series it is not possible to discern with reasonable confidence the current direction of the trend at the end of these series. For such highly irregular series the ABS does not provide the last two trend estimates.

10. Users may wish to refer to the ABS Information Papers *A Guide to Smoothing Time Series — Estimates of 'Trend'* (1316.0) and *Time Series Decomposition — An Overview* (1317.0) for more detailed information on smoothing of seasonally adjusted time series data.

Related publications

11. Other ABS publications which may be of interest are:

Manufacturing Production, Australia, Household Appliances and Electrical Equipment (8357.0) — issued quarterly

Manufacturing Production, Australia, Clothing and Footwear (8358.0) — issued quarterly

Manufacturing Production, Australia, Food, Drink, Tobacco, Stock and Poultry Food (8359.0) — issued quarterly

Manufacturing Production, Australia, Fibres, Yarns, Fabrics, Bedding and Floor Coverings, (8360.0) — issued quarterly

Manufacturing Production, Australia, Building Materials and Fittings (8361.0) — issued quarterly

Manufacturing Production, Australia, Plastics, Rubber, Paints, Detergents and Industrial Chemicals (8362.0) — issued quarterly

Manufacturing Production, Australia, Transport Equipment (8363.0) — issued quarterly

Manufacturing Production, Australia, Metal Products (8367.0) — issued quarterly

Manufacturing Production, Australia, Energy Products (8368.0) — issued quarterly

Manufacturing Production, Australia, Wood and Wood Products (8369.0) — issued quarterly

Manufacturing Production, Australia: Principal Commodities Produced, 1989-90 (8365.0)

Unpublished production data is also available from the ABS Sydney office. Please contact Colin Nicholson on (02) 268 4282.

12. Current publications produced by the ABS are listed in the *Catalogue of Publications and Products, Australia* (1101.0). The ABS also issues, on Tuesdays and Fridays, a *Publications Advice* (1105.0) which lists publications to be released in the next few days. The Catalogue and Publications Advice are available from any ABS office.

Symbols and other usages

- n.y.a. not yet available
- r figure or series revised since previous issue
- n.a. not available



For more information ...

The ABS publishes a wide range of statistics and other information on Australia's economic and social conditions. Details of what is available in various publications and other products can be found in the *ABS Catalogue of Publications and Products* available at all ABS Offices (see below for contact details).

Information Consultancy Service

Information tailored to special needs of clients can be obtained from the Information Consultancy Service available at ABS Offices (see Information Inquiries below for contact details).

National Dial-a-Statistic Line

0055 86 400

(Steadycom P/L: premium rate 25c/21.4 secs.)

This number gives 24-hour access, 365 days a year for a range of statistics.

Electronic Data Services

Selections of most frequently requested statistics are available, updated daily, on DISCOVERY (Key *656#). For more details on electronic data services available, contact Information Services in any of the ABS Offices (see Information Inquiries below for contact details).

Bookshops and Subscriptions

There are over 400 titles of various publications available from ABS bookshops in all ABS Offices (see below Bookshop Sales for contact details). The ABS also provides a subscription service through which nominated publications are provided by mail on a regular basis at no additional cost (telephone Publications Subscription Service toll free on 008 02 0608 Australia wide).

Sales and Inquiries

Regional Offices	Information Inquiries	Bookshop Sales
SYDNEY (02)	268 4611	268 4620
MELBOURNE (03)	615 7000	615 7829
BRISBANE (07)	222 6351	222 6350
PERTH (09)	323 5140	323 5307
ADELAIDE (08)	237 7100	237 7582
HOBART (002)	20 5800	20 5800
CANBERRA (06)	207 0326	207 0326
DARWIN (089)	43 2111	43 2111
National Office		
ACT (06)	252 6007	008 020 608

ABS Email Addresses

Keylink	STAT.INFO/ABS
X.400	(C:AU,A:TELMEMO,O:ABS,SN:INFO,FN:STAT)
Internet	STAT.INFO@ABS. TELEMEMO.AU



Information Services, ABS, PO Box 10, Belconnen ACT 2616

